

Knowledge Organiser - Year 6 - Autumn 2

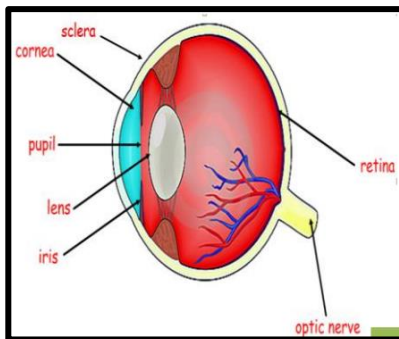


Key Knowledge

1.	Light travels in straight lines
2.	Objects are seen because they give out or reflect light into the eye
3.	Shadows have the same shape as the objects that cast them
4.	Smooth, shiny surfaces such as mirrors and metals reflect light well
5.	Dull and dark surfaces such as dark fabrics do not reflect light well
6.	A light source is something that provides light, it can be man-made or a natural source of light

How Do We See?

We see things because the light travels from light sources to our eyes or from light sources to objects and then to our eyes.



Trafford Centre Facts

1.	The Trafford Centre took 27 months to build
2.	It cost approximately £600 million to build
3.	There are over 150 restaurants and shops
4.	There are over 12,500 parking spaces
5.	Decorated with over 100 statues and sculptures
6.	Barton Clough has two separate time capsules buried within the Trafford Centre
7.	The Trafford Centre has won 'Loo of the Year' 17 years in a row! They have the cleanest toilets in Manchester

How we see...

Rays of light travel from a light source and hit objects around us. The rays of light reflect, or bounce off an object and then travel into our eyes. This reflection of light allows us to see light.



1. Light from the light bulb travels in a straight line and hits the chair.

2. The ray of light is reflected off the chair and travels in a straight line to the girl's eyes, enabling her to see the chair.

Sports Teams in Trafford

Manchester Storm



Manchester United



Manchester Giants



Sale Sharks



Vocabulary

Opaque	Objects that do not let any light pass through them
Translucent	Objects that let some light through but scatters the light so it is not clear
Transparent	Allowing all light to pass through easily so that objects behind can be seen
Shadow	An area of darkness where light has been blocked
Absorb	To take in or soak up
Reflect	To throw back light without absorbing it
Periscope	An instrument people use to look at things from a hidden position